

ALWIL Software

avast32

Firewall Edition

Contents

1	Welcome	5
2	Installation notes	7
3	Installation	9
	3.1 System requirements	9
	3.2 Installing	9
	3.3 Problems with installation	14
4	Scanning the file content on the Firewall	15
	4.1 System architecture	15
	4.2 Setting Avast	16
	4.3 Firewall Setting	16
5	Avast32 Task setting	17
	5.1 Protocols	17
	5.2 Advanced Parameters	18
	5.3 Other settings	18
6	Firewall settings	21
	6.1 CVP Server	21
	6.2 Resources	22
7	FAQ	25

Picture index

3.1	Language selection	10
3.2	Window of the installation program	10
3.3	License Agreement between you and the ALWIL Software	11
3.4	Enter your activation key here	12
3.5	Select type of the installation	12
3.6	Ip-address of CVP server	13
3.7	Computer restart selection	14
4.1	Connect Avast32 Firewall Edition in firewall	15
5.1	Parameters settings for the file testing	17
5.2	Advanced parameters	18
5.3	Archives	19
6.1	Network Objects	21
6.2	Network object definition	21
6.3	Servers	22
6.4	CVP server definition	22
6.5	Resources	23
6.6	URI source definition	23

1 Welcome

Dear Customer, we congratulate you on purchase of our antivirus program AVAST32 3.0 Firewall Edition. We hope, that you will be satisfied with our product and that it will be pleasure to work with.

AVAST32 3.0 Firewall Edition creates a complete antivirus defense of firewalls supporting the CVP protocol. It works as a addon to standart AVAST32 3.0 Network Edition.

It allows you to check files coming through firewall, e.g. from your network to internet and likewise from internet to your network. Checks files passing through HTTP and FTP protocols. It also checks e-mails.

In case of any problems, contact your distributor or corporation ALWIL Trade. Their workers will be glad to help.

ALWIL Software wishes you nice and virus-free work with your computer.

2 Installation notes

Avast32 Firewall Edition works with firewalls, which supports CVP protocols. The most known utility is Checkpoint Firewall-1. If you are not sure, whether your firewall supports CVP or not, check the documents to your firewall.

You should also know the system architecture. Select well the computer, where you want the Avast32 Firewall Edition and check the ip-address of this computer. After running the Avast32 Firewall Edition you must have the rights to administrate the firewall.

3 Installation

AVAST32 3.0 Firewall Edition can be installed on whatever network computer running Windows NT 4.0, preferably the computer where is the firewall installed. The program configuration however can be done from whatever computer running the 32-bit Windows operating system.

The program offers two installation:

- the server installation that executes all the antivirus code and is installed directly on the computer with firewall or another network computer.
- the client installation which is in fact just an add-in to ordinary AVAST32 version 3.0 installation that enables the user to perform remote administration.

Avast32 Firewall Edition requires that you have already installed Avast32 version 3.0. Before initiating the installation of the Firewall components please make sure that Avast32 is properly set up (on both the server and the client(s)).

3.1 System requirements

In order to successfully install AVAST32 in your computer and subsequently use without errors, it is necessary that your computer system should meet a few of basic requirements.

For Server installation:

- processor 486 and higher
- 64 MB paměti RAM
- Windows NT 4.0 Server

For Client installation:

- any computer capable of running AVAST32 version 3.0

3.2 Installing

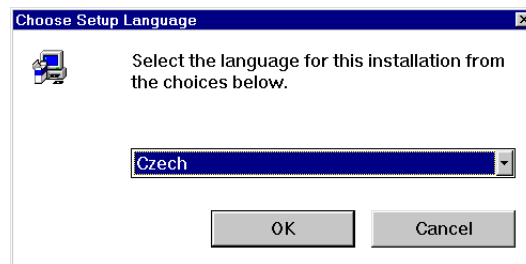
The installation is started by SETUP.EXE file from AVAST32.FWL directory, which can be found on installation CD.

The installation of the AVAST32 program runs in the form of a dialog between the user and installation program. In the following text we will thoroughly describe particular windows which are displayed during the installation.

The installation can be canceled at any time - the way of how to do it is described at the corresponding installation windows. Before the cancelling of installation the user will be asked whether he is serious. After the confirmation of the cancelling of installation

everything which has been installed till that time shall be removed and the system shall be placed in its initial status.

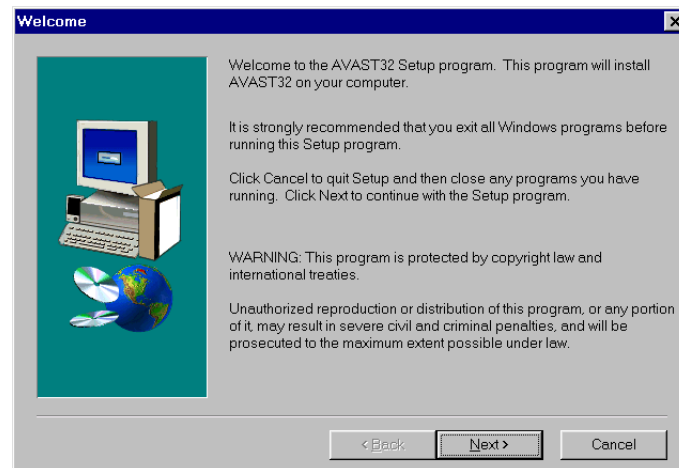
When you start AVAST32 installation you can choose the language (fig. 3.1), which you would like to communicate with in the program. Choosing a specific language from a list, which appears after a click on the arrow to the right from current language, can do the selection.



3.1 Language selection

You will be asked to be patient while the installation is preparing after the language selection.

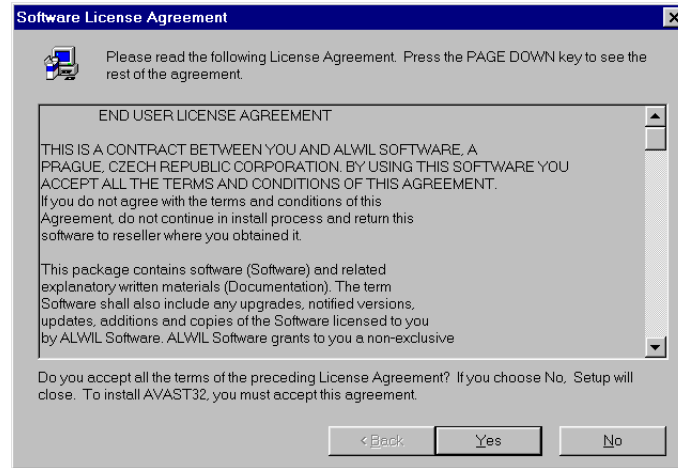
Once the preparation of the installation is finished, you will see the window (fig. 3.2) of the installation program itself. The Wizard's window is situated in the center and it will help you with the whole installation process. Its lower part contains three buttons enabling you to communicating with Wizard instructions.



3.2 Window of the installation program

Button "< Back" takes you to the preceding window of the Wizard. If it cannot be used (e.g. if you are at the first installation step, then the button is gray. Button "Next >" takes you to the next step of the Wizard. Before using it, however, we recommend you reading thoroughly the contents of the Wizard's window. Hitting the "Cancel" button you can interrupt the installation process at any time.

The first window of the Wizard provides the user copyright ownership and warns him from unauthorized usage of the program or its parts. Having read it you would move to the next window of the Wizard by clicking on the "Next >" button.



3.3 License Agreement between you and the ALWIL Software

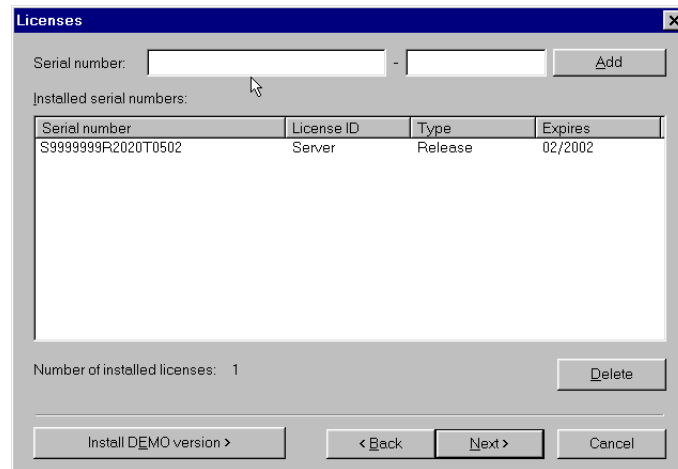
The next installation program window contains the License Agreement (fig. 3.3) between you and the ALWIL Software company. This License Agreement includes conditions that you, being a user of AVAST32, must agree with, and the rights which you have as a user of the program. If you agree with the License Agreement and to all of its parts, click on the "Yes" button. Then the Wizard will lead you to the next installation step. If you do not agree with the License Agreement, by clicking on the "No" button you will cancel the installation program and AVAST32 would not be installed then.

As the License Agreement is greater than the Wizard's window, it cannot be displayed as a whole. On the right side of the window you will find a slider enabling move in the License Agreement. Its indicator at the same time shows the current position. To display the remaining parts of the License Agreement it is also possible to use the keys designed for the cursor movement upwards and downwards, or the keys marked as "PgUp" and "PgDn" for the movement to previous or next page of the License Agreement.

The window that follows after the License Agreement window displays the README.TXT file. This file contains important information which we have not managed to insert into this documentation because of time limitations. The information may concern the program itself but also e.g. installation, and it may also contain procedure instructions in case of problems. In any case you should thoroughly read the README.TXT file - thus you will avoid possible complications in the future.

Within the displayed text it is possible to move in the same way as in case of the License Agreement in the previous Wizard's window. Also the window control is similar. If you have read the README.TXT file, by clicking on the "Yes" button you will come to the next Wizard's button. The "< Back" button will return you to previous window with the License Agreement and using the "No" button you will cancel the installation of AVAST32.

The next windows shows the Wizard's dialog into which it is necessary to enter the activation key (fig. 3.4) of your program copy. To enter or change data in a particular text



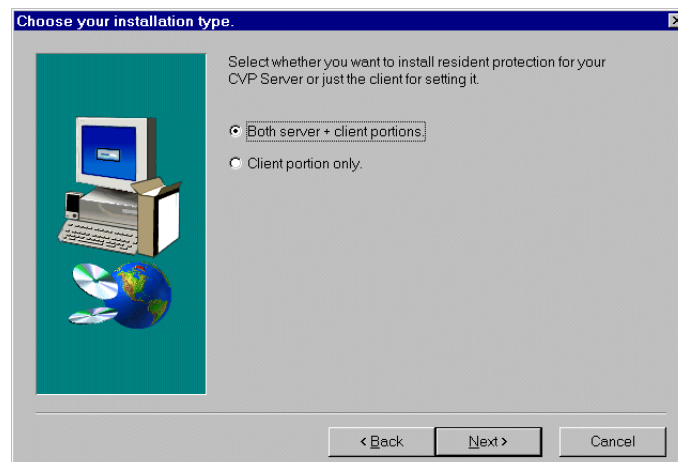
3.4 Enter your activation key here

box will be possible for you by clicking the left mouse button on the corresponding box. It is also possible to move to the text box in question by repeating pressing the "Tab" key.

Be careful when typing the activation key. The program can not be installed without a valid key!

Confirm the activation key by pressing "Next >" button, if the key is valid and correctly entered the Wizard let you proceed further. Otherwise you will get error message and you would have to check the activation key. By pressing "< Back" button you can go back to the window with displayed README.TXT file.

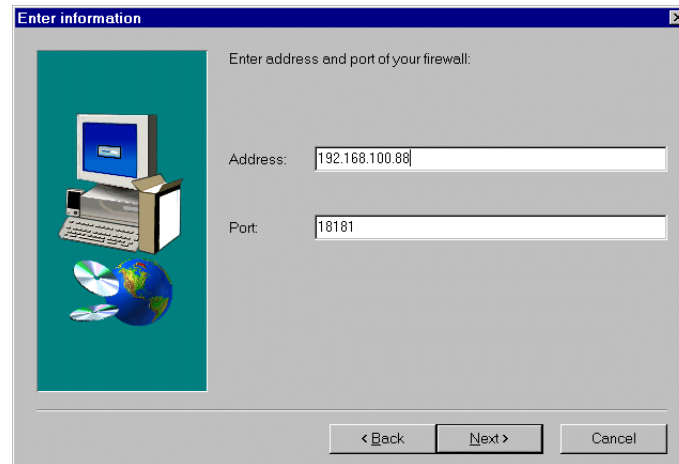
The next window allows to choose a type of the installation (fig. 3.5). If you would like to test the files on the computer, choose "Server+Client". If the computer should be used for the remote administration only choose "Client only". Confirm your selection by pressing "Next >" button, and the Wizard let you proceed further. By pressing "< Back" button you can go back to the window with activation key dialog.



3.5 Select type of the installation

The next window would appear only in the case that "Server+Client" installation has been selected. On this page (fig. 3.6) it is necessary to enter the ip address and port, where AVAST32 should be listening. ENTER THE ADDRESS OF COMPUTER WHERE AVAST32 FIREWALL EDITION IS INSTALLED, NOT THE ADDRESS OF FIREWALL.

Confirm the entered values by pressing "Next >" button, and the Wizard let you proceed further. By pressing "< Back" button you can go back to the window, where you can select type of the installation.



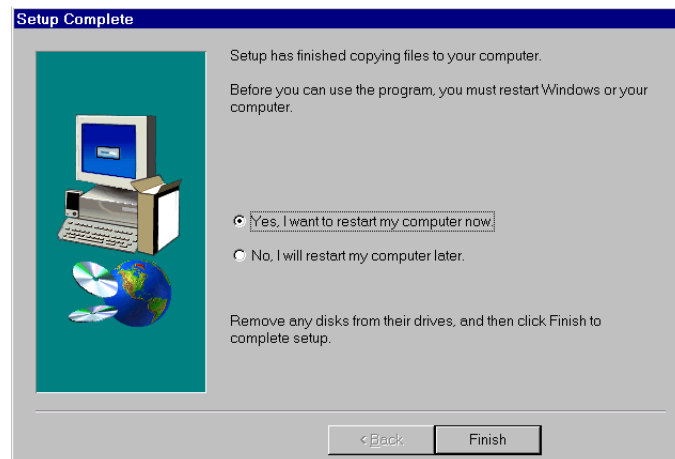
3.6 Ip-address of CVP server

The following window displays all the information you have entered into the Wizard. We ask you to check the above listed data and if it is not suitable for you or if these data does not correspond to the real situation, you can return to the previous windows of the Wizard clicking the "< Back" button and correct it as appropriate. If everything is according to your requirements, by clicking on the "Next >" button you can start to install the files of the AVAST32 program onto your hard disk. By means of the "Cancel" button you can interrupt the installation.

An indicator in installation window informs you about amount of copied files. Once all files are installed installation wizard automatically goes to the next window.

The last window of the Wizard is shown in this Figure (fig. 3.7). It contains the radio buttons by means of which you can specify whether the computer is to be restarted or whether the installation program is to be completed without restarting your computer. We recommend you to keep the default radio button. By clicking on the "End" button you will finish the installation program and depending on the radio button selected your computer will (or will not) be restarted.

After the installation of the AVAST32 program and before its first start-up it is necessary to restart your computer. If you did not do so with the help of the Wizard in its last window, you would have to do it later by yourself. In the menu of the "Start" button select the "Shut Down ..." command. Then select the "Restart the computer?" radio button in the window displayed, and by pressing the "Yes" button you will restart your computer.



3.7 Computer restart selection

3.3 Problems with installation

The most frequent problems connected with the installation of the AVAST32 program:

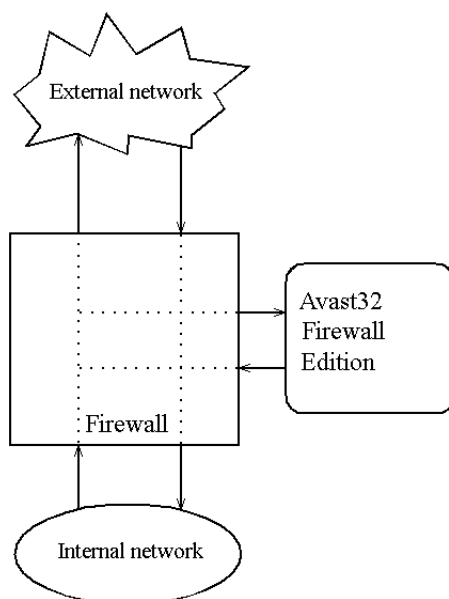
- It is not possible to install due to a activation key error. You have entered an incorrect activation key. Make sure that it has really been entered correctly. If you are completely sure that it has and that you have not entered the letter "O" instead of zero (and vice versa), contact ALWIL Trade Ltd. (the address is on the cover of supplied CD-ROM) and require a check of the activation key.
- program cannot be installed for insufficient user rights. Log out and then log in as administrator or contact your network administrator.

If any other installation errors appear it is necessary to make sure whether they are not caused by your own errors or by errors of your system. If you have fully excluded any problem on your side, do not hesitate and contact the technical support. Note, however, all error messages.

4 Scanning the file content on the Firewall

4.1 System architecture

Firewall supporting the CVP protocol allows sending the files to CVP server. This process them and send firewall the result. Firewall than sends it to its right place. Example: User sends request for internet page. This request is processed by firewall, wich checks, where it is sent and where it comes. These parameters are checked, and then the firewall decides, whether to allow it or ban it. If the first solution comes out, firewall downloads the file, and, according to the settings, sends it to the CVP server. CVP server will find out, using its setting, whether to test the file or not. If it will test the file and finds something nasty, e.g. virus, it can modify the file according to the setting of itself and the firewall. At the end it will send a report to firewall or sends the modified file. Finally the firewall will send the user the file or just an information about the file status.



4.1 Connect Avast32 Firewall Edition in firewall

Avast32 Firewall Edition works here as a CVP server, which tests if the files are infected. It can be installed on the same computer the firewall is on, or in another computer. For maximum performance, it is suggested to install it on the same computer.

4.2 Setting Avast

To let Avast32 Firewall Edition test the files, it must be properly configured. the Avast32 engine must be running when the firewall is working. It is suggested to change the setting of service "Avast32 Start as Service" to "Automatic". Next, it is needed to create a task in Avast and configure it for running after the engine starts. Setting of the task is specified in chapter Task setting for Avast32.

The communication itself between Avast and Firewall itself is provided by service "Avast32 for CVP Firewalls", which is installed by installed program. If this service cannot communicate with Avast (e.g. the engine is not running, or the task is not running), it answers the firewall requests by message, that the file is not infected.

Avast32 Firewall Edition can distinguish the difference, using the CVP protocol, between files transferred by FTP, HTTP and SMTP protocols.

4.3 Firewall Setting

To let the filetesting proceed, you must tell the firewall, where it can find the CVP server (Avast32), and which files should be tested. This setting differs for different firewalls. In chapter "Firewall Setting" is a detailed manual for setting the Checkpoint Firewall-1. In general we can say, that it is needed to set the ip-address and port, on which CVP server Avast32 Firewall Edition is connected, and rules, which they use.

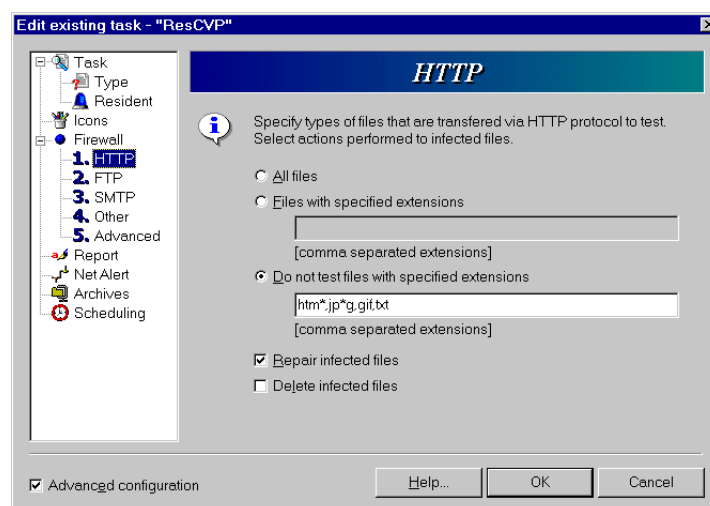
5 Avast32 Task setting

Avast32 3.0 Firewall Edition functions are administered through the task created in enhanced user interface of Avast32 program.

To run the Avast32 program, select the Start button, select the "Programs" folder, than "AVAST32 Antivirus" and in this folder click on the "AVAST32" icon. After the Avast32 program is running, make sure that you are in enhanced user interface. If you work in simple user interface, click the left mouse button on the icon in the upper left corner of the Avast32 window and from the list viewed, select the Enhanced user interface. On page "Tasks" in enhanced user interface click left mouse button on the task list or click on "Task" menu item and from the menu shown select "Create new...". A dialog for creating tasks will appear. On page "Type" select the resident task radio button. On page "Resident" select the "Firewall" provider. The task will now have five more pages for settings of file testing. It's description will be in next chapters.

5.1 Protocols

The first four pages are looking almost similar, except each of this pages is about setting of one of the network protocols. CVP protocol is now working with FTP, HTTP and SMTP protocols. Settings from the "Other" page will be applied in case, that in firewall request will be specified other protocol than the ones used. This should not happen, because this function was implemented for the times, when CVP protocol will be enhanced in the future.



5.1 Parameters settings for the file testing

For each protocol can be specified types of files, that should be tested by Avast32 Firewall Edition. You can

- test all files

- test files with specified extensions
- test files with other extensions than those specified

When specifying the extensions, you can use wildcards. Wildcard "*" can be exchanged for a variable number of appearing of any character. Wildcard "?" can be exchanged for one appearance of variable character. Examples:

For mask *htm* these strings are available: **htm, html, shtml, htmx.**

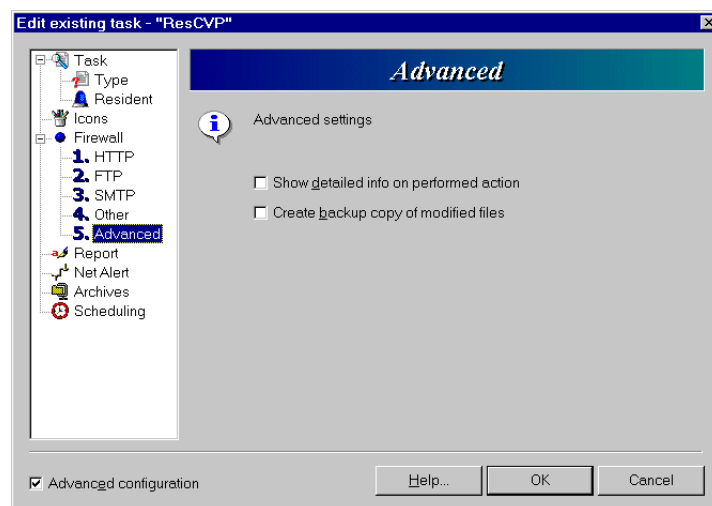
For mask htm? these strings are available: **html, htmx**, but not, for example, **htm**

For mask jp*g strings **jpg, jpeg, jpexeg** are available.

Default setting for "HTML" is "Do not test files with extensions **htm*,jp*g,gif,txt**" and for "FTP" its "do not test files with **txt** extension". For "SMTP" and "Other" all files are tested.

Settings "Repair infected files" and "Delete infected files" specifies the acting of Avast32 Firewall Edition in case a virus is found. If none of these is selected, file is just tested and with the result set back to firewall. If both are selected, attempt for repair is done first, and if it is a failure, the file is deleted.

5.2 Advanced Parameters



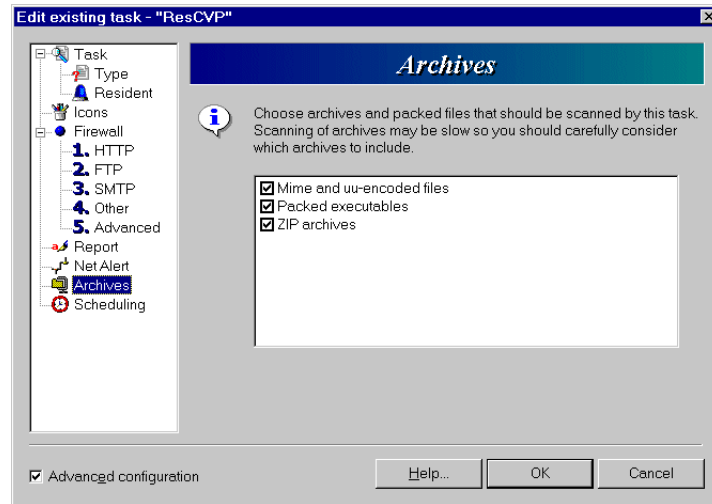
5.2 Advanced parameters

If a checkbox "Show detailed informations on performed tasks" is selected, the information about the file testing are shown in lower right corner of the screen. We recommend to turn this feature on only when you are debugging the settings, because all messages shown on the screen take a lot of machine time. Avast32 Firewall Edition allows you to save all modified files into the CVP directory, where Avast32 is installed.

5.3 Other settings

It is suggested to use the automatic launch of this task after the Avast will start. On "Scheduling" page select the "Start the task with Operating System" checkbox. Check, if another resident task with this setting does exist. If more of these tasks exist, than it cannot be specified, which of them will run first. Let us just remind you, that in one resident task

can be more providers, so one of these can be Avast32 Firewall Edition and Avast32 Lotus Notes Edition.



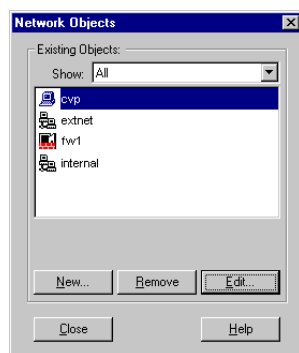
5.3 Archives

You can also test all of the available archives on page "Archives". If you do not wish to test some of the archives, you can, of course, exclude them. We must inform you though, that for testing e-mails a "Mime and uu-encoded files" checkbox must be selected.

6 Firewall settings

In this chapter we will describe all steps, needed for Avast32 Firewall Edition installation on Checkpoint Firewall-1. In other firewalls the setting will be different from this, but the basis will probably be the same.

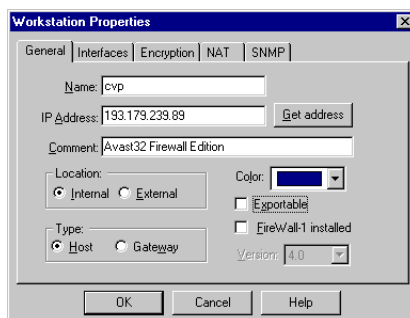
All setting will be done through "Security Policy" program. You must be logged on as an administrator.



6.1 Network Objects

6.1 CVP Server

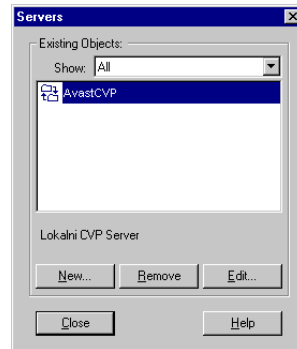
In first place, define the CVP server. You need a network object which will represent the computer, where Avast32 Firewall Edition is installed.



6.2 Network object definition

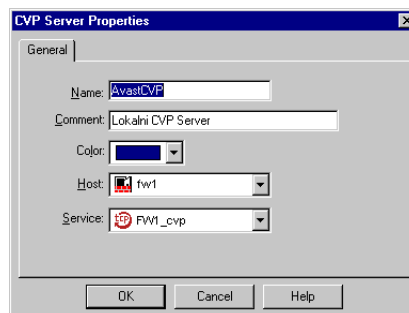
If you have installed the Avast32 Firewall Edition directly on firewall, than you have a network object already. In your defined objects (menu "Manage" -- "Network Objects") find your firewall. After that, select "Edit" button and find the "IP Address" page. Check, if this address is the same with the one you entered during Avast32 Firewall Edition installation. If it is not, it is possible to change it in INI file of Avast32 program in

CVP section (INI file of Avast32 program is saved in DATA subdirectory, where Avast32 is installed). After the change , the computer should be restarted.



6.3 Servers

If you have installed Avast32 Firewall Edition on another computer than the firewall is located, create new network object (menu "Manage" -- "Network Objects", "New" -- "Workstation"). Into the "IP address" area enter the address you have entered during the Avast32 Firewall Edition installation.

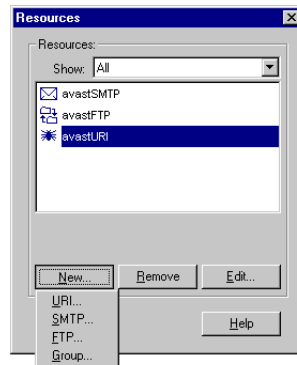


6.4 CVP server definition

We will now define the CVP server (menu "Manage" -- "Servers", "New" -- "CVP ..."), In colon "Host" select a computer with Avast32 Firewall Edition installed. In case you have installed directly on firewall, it will be a network object, which represents your firewall, otherwise it will be the object you have recently created.

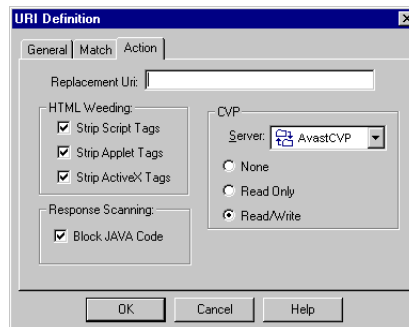
6.2 Resources

With this server, you can create resources, which will be than used in rules. Create a new resource for HTTP protocol (menu "Manage" -- "Resources", "New" -- "URI ..."). On page "Action" select in CVP section the newly created CVP server. If "None" is selected, file will not be tested. Choice "read only" means, that infected file will not be transferred. Choice "read/write" causes, that CVP server will try to repair the file. In a very similar way, the FTP and SMTP protocols can be defined.



6.5 Resources

These resources can be than used in rules. In colon "Service" select in menu item "Add with resource..." and there select the according resource. For creating rules you can install rules on firewall (menu "Policy" -- "Install"). From now on the testing by CVP server is on-line.



6.6 URI source definition

7 FAQ

I've made a mistake during the IP address specification. Do I need to reinstall the program to change it?

No. These parameters can be changed in INI file of AVAST32, which is in subdirectory DATA of a directory, where AVAST32 is installed, in section CVP. Reboot the computer.

I have created task for AVAST32 Firewall Edition and ran it. In bottom right corner of the screen a gray icon of resident task. What does it mean?

If all components of AVAST32 Firewall Edition are running, the icon should be blue. If it is gray, it means that service "Avast32 for CVP Firewalls" is not running. Run the services program (Start -- Nastavení -- Ovládací panely -- Služby) and check, if in the list is "Avast32 for CVP Firewalls" available and if it is running. If not, run it. If the service still cannot run, check the "Event Log". Make also sure that the service will be ran automatically. If the service is not in list run the AvCvpSrv.exe -i program. In case of other problems, try to uninstall the service first (AvCvpSrv.exe -u), reboot the computer and install it again (AvCvpSrv.exe -i).

Does AVAST32 Firewall Edition test compressed files?

The ability to test files of AVAST32 Firewall Edition is the same as is the ability of AVAST32 Network Edition, which cooperates with AVAST32 Firewall Edition. It also depends on the task setting, page "Archives".

I've received e-mail with zip file and AVAST32 Firewall Edition did not test it, even if in the task was set that it should.

The current versions of AVAST32 do not allow to test the compressed files inside other compressed files. AVAST32 takes e-mails as a compressed files (Mime and uu-encoded). That's why the compressed files in e-mails are not tested.

Can I be sure, that the file I've received from Internet and which came through AVAST32 Firewall Edition does not include virus?

No. There are some situations in which the file does not come through firewall whole, but divided in parts. If a virus is divided this way the program cannot detect it. This dividing of files can be done by, for example, some e-mail programs during the sending of long e-mails.